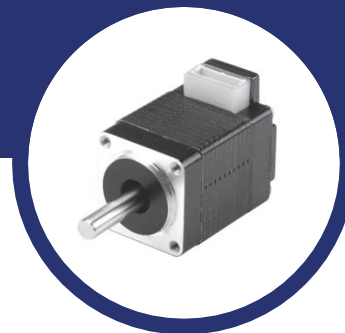


NEMA 8 Standard Hybrid Stepper Motor



Key Features

- Small Size
- Smooth Movement
- Low Inertia
- Step angle: 1.8°

General Specifications

- Bi-polar

Part Number	Length (mm)	Connect P=Side plug F=Front plug R=Rear plug	Holding Torque (mNm)	Resistance per Phase (Ω)	Inductance per Phase (mH)	Detent Torque (mNm)
MS08HY1P4050	29.5	P	32	8.6	5.6	2
MS08HY1F4050	29.5	F	32	8.6	5.6	2
MS08HY1R4050	29.5	R	32	8.6	5.6	2
MS08HY3P4060	39.5	P	49	6.6	4.1	3
MS08HY3F4060	39.5	F	49	6.6	4.1	3
MS08HY3R4060	39.5	R	49	6.6	4.1	3
MS08HY5P4060	46.5	P	58	8	6.1	4
MS08HY5R4060	46.5	R	58	8	6.1	4
MS08HY5F4060	46.5	F	58	8	6.1	4

Stegia AB

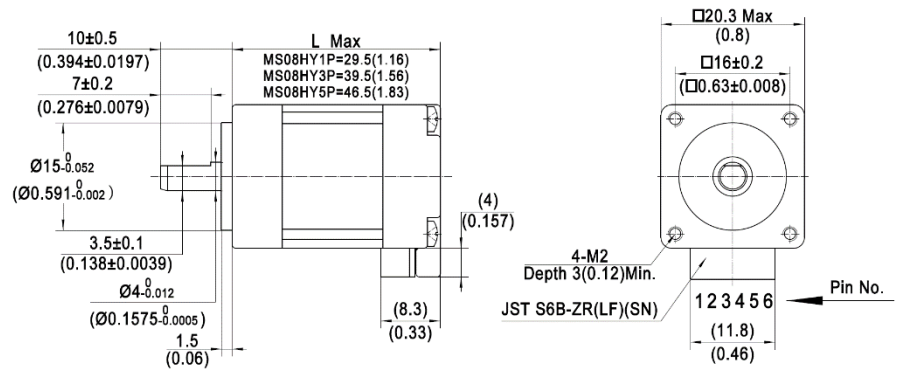
Regattagatan 22B
723 48 Västerås, Sweden
+46 (0) 21 811 822
info@stegia.com

Stegia Shanghai Co., Ltd.

A-7, No.38, Dongsheng Rd
Pudong, Shanghai, China, 201201
+86 21 58591682

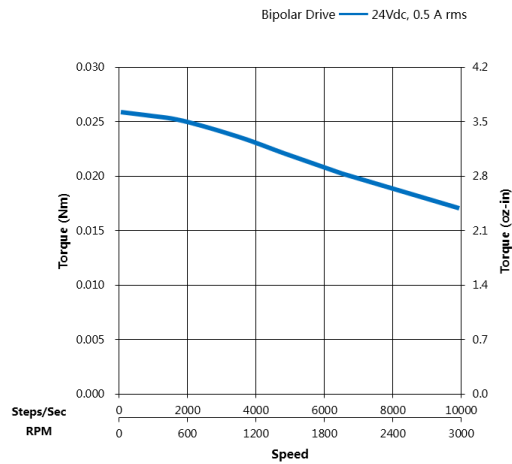
Mechanical Dimensions

Series	L (mm)
MS08HY1	29.5
MS08HY3	39.5
MS08HY5	46.5

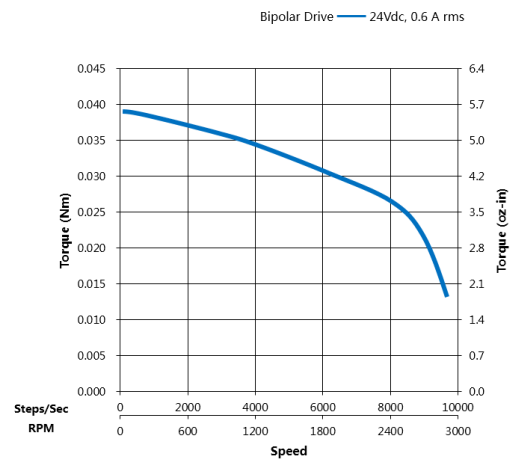


Dynamic Torque Curves

MS08HY1P/F/R4050



MS08HY3P/F/R4060



MS08HY5P/F/R4060

