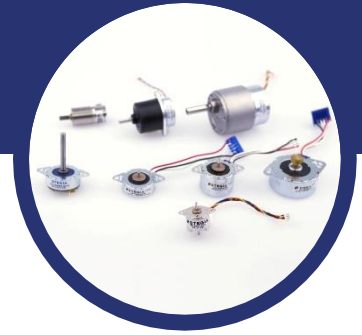


25TSG Series



Key Features

- High torque
- Low noise
- Small size
- Motor step angle 3,75° & 7,5° & 15°

General Specifications

Series	Reduction (:1)	Step angle (°)	Voltage (V)	Current (A)	Resistance (ohm)	Inductance (mH)	Holding torque (mNm)
25TSG24B06R010-00	10	1,5°	24	0,4	6	2,3	80
25TSG24B06R021-00	21	0,714°	24	0,4	6	2,3	168
25TSG24B06R043-00	43	0,349°	24	0,4	6	2,3	344
25TSG24B06R090-00	90	0,167°	24	0,4	6	2,3	400
25TSG24B06R188-00	188	0,080°	24	0,4	6	2,3	400
25TSG24B06R392-00	392	0,038°	24	0,4	6	2,3	400
25TSG24B23R010-00	10	1,5°	24	0,4	23	6,3	130
25TSG24B23R021-00	21	0,714°	24	0,4	23	6,3	273
25TSG24B23R043-00	43	0,349°	24	0,4	23	6,3	400
25TSG24B23R090-00	90	0,167°	24	0,4	23	6,3	400
25TSG24B23R188-00	188	0,080°	24	0,4	23	6,3	400
25TSG24B23R392-00	392	0,038°	24	0,4	23	6,3	400
25TSG48B06R010-00	10	0,75°	24	0,4	6	2,8	140
25TSG48B06R021-00	21	0,357°	24	0,4	6	2,8	294

25TSG48B06R043-00	43	0,174°	24	0,4	6	2,8	400
25TSG48B06R090-00	90	0,083°	24	0,4	6	2,8	400
25TSG48B06R188-00	188	0,040°	24	0,4	6	2,8	400
25TSG48B06R392-00	392	0,019°	24	0,4	6	2,8	400
25TSG48B23R010-00	10	0,75°	24	0,4	23	8,8	220
25TSG48B23R021-00	21	0,357°	24	0,4	23	8,8	400
25TSG48B23R043-00	43	0,174°	24	0,4	23	8,8	400
25TSG48B23R090-00	90	0,083°	24	0,4	23	8,8	400
25TSG48B23R188-00	188	0,040°	24	0,4	23	8,8	400
25TSG48B23R392-00	392	0,019°	24	0,4	23	8,8	400
25TSG96B06R010-00	10	0,375°	24	0,4	6	3,8	150
25TSG96B06R021-00	21	0,179°	24	0,4	6	3,8	315
25TSG96B06R043-00	43	0,087°	24	0,4	6	3,8	400
25TSG96B06R090-00	90	0,042°	24	0,4	6	3,8	400
25TSG96B06R188-00	188	0,020°	24	0,4	6	3,8	400
25TSG96B06R392-00	392	0,010°	24	0,4	6	3,8	400
25TSG96B23R010-00	10	0,375°	24	0,4	6	3,8	200
25TSG96B23R021-00	21	0,179°	24	0,4	6	3,8	400
25TSG96B23R043-00	43	0,087°	24	0,4	6	3,8	400
25TSG96B23R090-00	90	0,042°	24	0,4	6	3,8	400

Stegia AB

Regattagatan 22B
723 48 Västerås, Sweden
+46 (0) 21 811 822
info@stegia.com

Stegia Shanghai Co., Ltd.

A-7, No.38, Dongsheng Rd
Pudong, Shanghai, China, 201201
+86 21 58591682

25TSG96B23R188-00	188	0,020°	24	0,4	6	3,8	400
25TSG96B23R392-00	392	0,010°	24	0,4	6	3,8	400

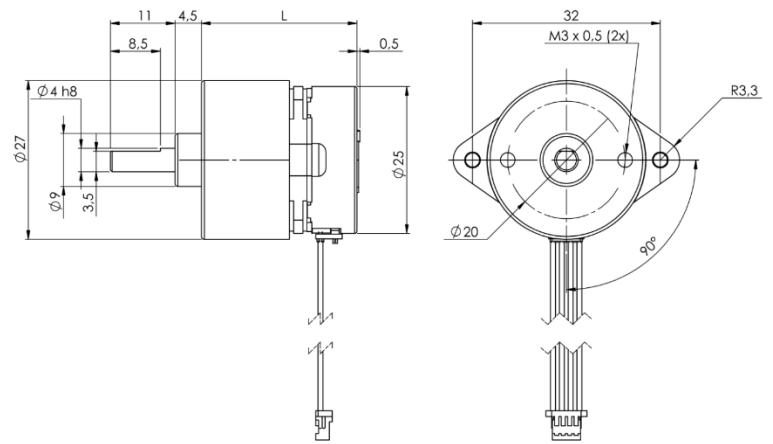
Optional Features

- Integrated driver
- Custom winding, wire harness
- Custom pinion, leadscrew
- Custom shaft

Length

- 26,5mm for 10:1 & 21:1
- 31,5mm for 43:1 & 90:1
- 36,5mm for 188:1 & 392:1

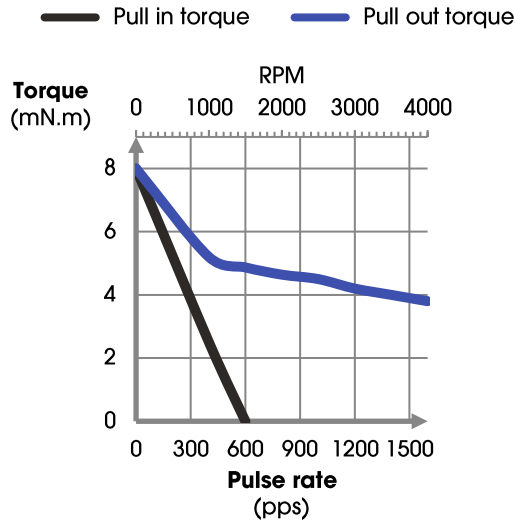
Mechanical Dimensions



Dynamic Torque Curves

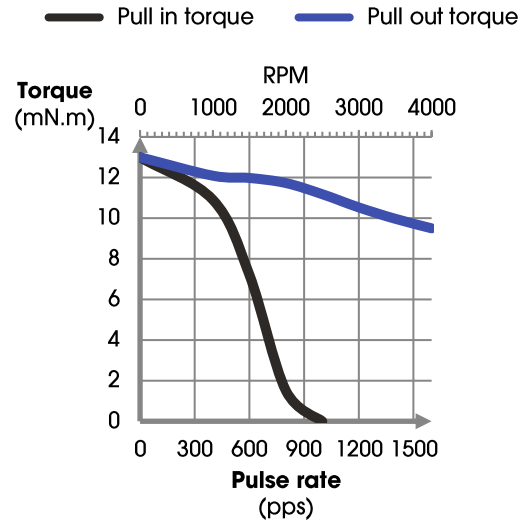
25TSG24B06

Conditions: Bi-polar Constant Current Driver
 Driver: AMIS 30522
 Mode: Full Step



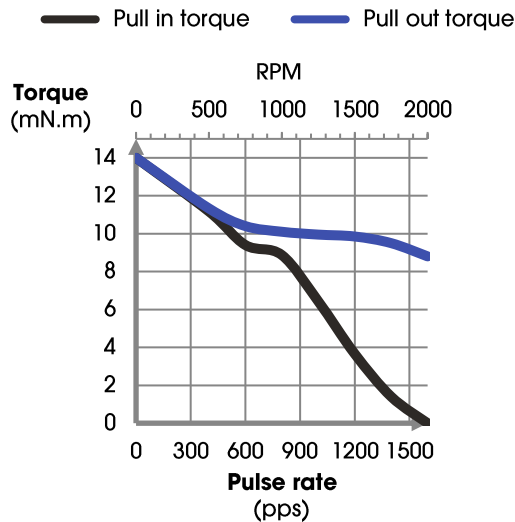
25TSG24B23

Conditions: Bi-polar Constant Current Driver
 Driver: AMIS 30522
 Mode: Full Step



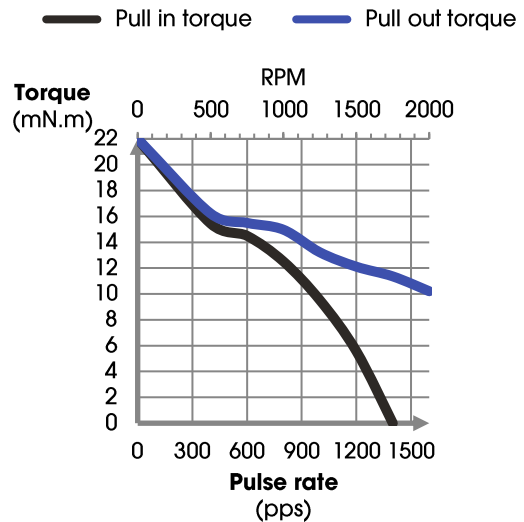
25TSG48B06

Conditions: Bi-polar Constant Current Driver
 Driver: AMIS 30522
 Mode: Full Step



25TSG48B23

Conditions: Bi-polar Constant Current
 Driver: AMIS 30522
 Mode: Full Step



Stegia AB

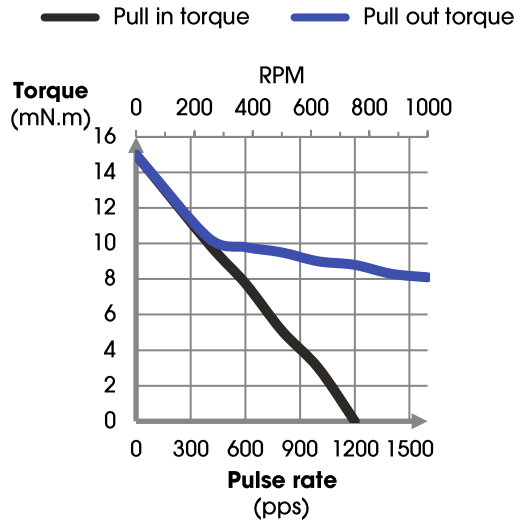
Regattagatan 22B
 723 48 Västerås, Sweden
 +46 (0) 21 811 822
 info@stegia.com

Stegia Shanghai Co., Ltd.

A-7, No.38, Dongsheng Rd
 Pudong, Shanghai, China, 201201
 +86 21 58591682

25TSG96B06

Conditions: Bi-polar Constant Current Driver
 Driver: AMIS 30522
 Mode: Full Step



25TSG96B23

Conditions: Bi-polar Constant Current Driver
 Driver: AMIS 30522
 Mode: Full Step

