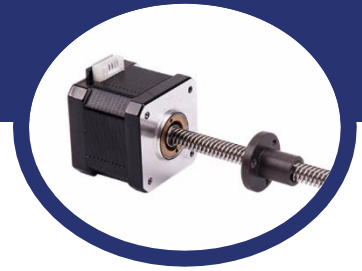


NEMA17 Hybrid Linear Stepper



Key Features

- Small linear actuator solutions
- High performance and exceptional endurance
- Multiple screws and nuts can be selected

General Specifications

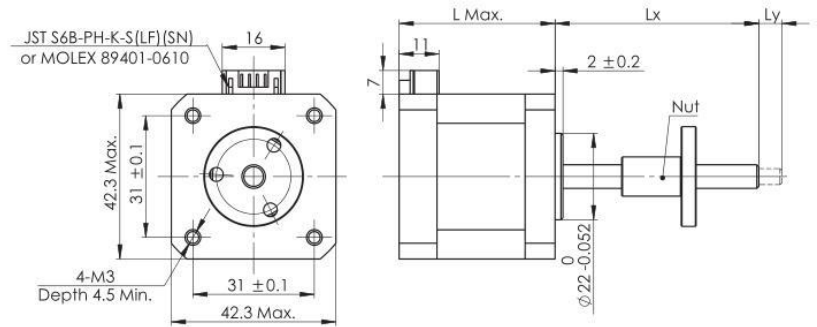
Part Number	Motor Length (mm)	Voltage (V)	Current (A)	Resistance (ohm)	Screw Length (mm)	Increment (mm/step)	Rated Thrust (N)
LSM172S-T0808-153-AR3-0	39.8	12/24	2	1.61	153	0.04	81
LSM172S-T10105-153-AR2-0	39.8	12/24	2	1.61	153	0.0525	67
LSM172S-T6503-153-AR1-0	39.8	12/24	2	1.61	153	0.015	182
LSM176S-T0808-153-AR3-0	48.3	12/24	2	5.1	153	0.04	108
LSM176S-T10105-153-AR2-0	48.3	12/24	2	5.1	153	0.015	90

Optional Features

- Custom nuts
- Custom leadscrew

Motor Type	Dimension "L"
LSM172S	39.8 mm
LSM174S	34.3 mm
LSM176S	48.3 mm

Mechanical Dimensions



Dynamic Force Curve

LSM172S-T0808(Lead Screw:8mm)

- 24 Vdc, 2 A rms
- ◆ 12 Vdc, 2 A rms

