

## NEMA23 Hybrid Linear Stepper



### Key Features

- Small linear actuator solutions
- High performance and exceptional endurance
- Multiple screws and nuts can be selected

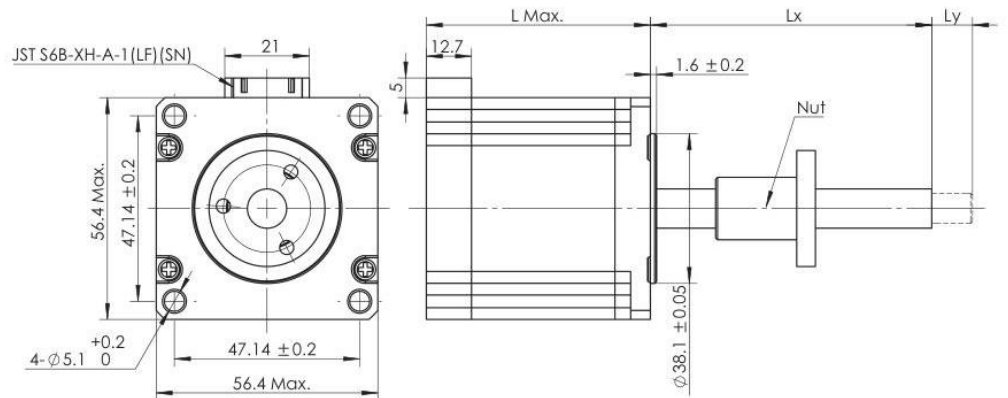
### General Specifications

Part Number	Motor Length (mm)	Voltage (V)	Current (A)	Resistance (ohm)	Screw Length (mm)	Increment (mm/step)	Rated Thrust (N)
<b>LSM238S-T1206-153-AR4-0</b>	57	24/36	2.2	1.6	153	0.03	188
<b>LSM238S-T10105-153-AR2-0</b>	57	24/36	2.2	1.6	153	0.0525	134
<b>LSM238S-T1206-153-AR4-0</b>	79	24/36	3	1.1	153	0.03	314
<b>LSM238S-T10105-153-AR2-0</b>	79	24/36	3	1.1	153	0.0525	224

## Optional Features

- Custom nuts
- Custom leadscrew

## Mechanical Dimensions



Motor Type	Dimension "L"	Note
LSM238S	57 mm	Standard
LSM23AS	79 mm	Standard
LSM23ASP	79 mm	Power Plus

## Dynamic Force Curves

