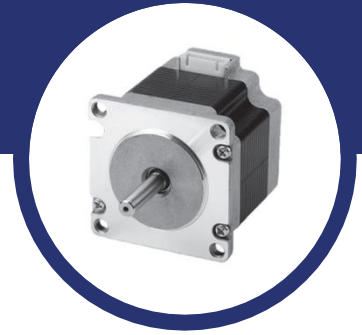


NEMA 23 PowerPlus Hybrid Stepper Motor



Key Features

- Ultra High Torque
- High Efficiency
- High Accuracy
- Step angle: 1.8°

General Specifications

- Bi-polar

Part Number	Length (mm)	Connect P=Plug L=Leads	Holding Torque (mNm)	Resistance per Phase (Ω)	Inductance per Phase (mH)	Detent Torque (mNm)
PL23HS8P4100	55	P	2300	7.6	26	100
PL23HS8P4100-E	55	P	2300	7.6	26	100
PL23HS8P4150	55	P	2200	3.1	10.7	100
PL23HS8P4150-E	55	P	2200	3.1	10.7	100
PL23HS8P4220	55	P	2300	1.6	5.4	100
PL23HS8P4220-E	55	P	2300	1.6	5.4	100
PL23HS8L4360	55	L	2300	0.63	2	100
PL23HS8L4360-E	55	L	2300	0.63	2	100
PL23HS8L4550	55	L	2200	0.28	0.8	100
PL23HS8L4550-E	55	L	2200	0.28	0.8	100
PL23HSAP4100	77	P	3300	8.8	32	150
PL23HSAP4100-E	77	P	3300	8.8	32	150
PL23HSAP4150	77	P	3400	4.3	15.2	150
PL23HSAP4150-E	77	P	3400	4.3	15.2	150

Stegia AB

Regattagatan 22B
723 48 Västerås, Sweden
+46 (0) 21 811 822
info@stegia.com

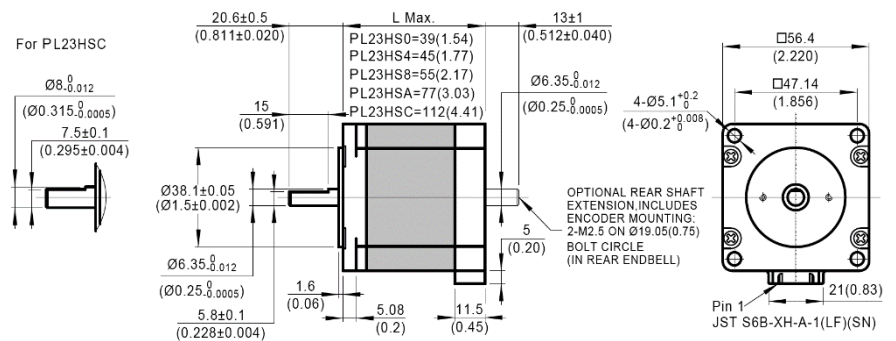
Stegia Shanghai Co., Ltd.

A-7, No.38, Dongsheng Rd
Pudong, Shanghai, China, 201201
+86 21 58591682

PL23HSAP4200	77	P	3300	2.3	8.1	150
PL23HSAP4200-E	77	P	3300	2.3	8.1	150
PL23HSAP4300	77	P	3300	1.1	3.7	150
PL23HSAP4300-E	77	P	3300	1.1	3.7	150
PL23HSAL4500	77	L	3300	0.39	1.27	150
PL23HSAL4500-E	77	L	3300	0.39	1.27	150

Mechanical Dimensions

Series	L (mm)	Mass (kg)
PL23HS8	55	0.65
PL23HSA	77	1.1



Dynamic Torque Curves

