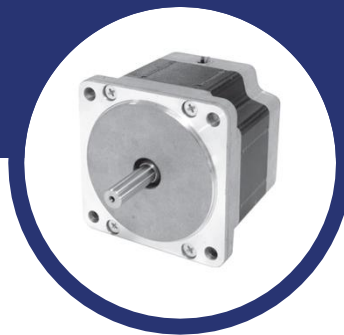


NEMA 42 Standard Hybrid Stepper Motor



Key Features

- High Torque
- Low Inertia
- Fast Raising Speed
- Step angle: 1.8°

General Specifications

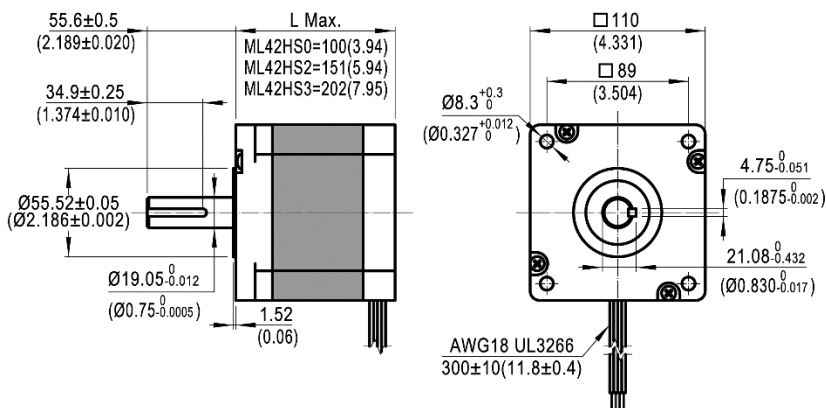
- Bi-polar

Part Number	Length (mm)	Connect P=Plug L=Leads	Holding Torque (mNm)	Resistance per Phase (Ω)	Inductance per Phase (mH)	Detent Torque (mNm)
ML42HS0L4210	100	L	12100	4.1	78	300
ML42HS0L4420	100	L	12200	1.16	19.8	300
ML42HS0L4600	100	L	12300	0.61	10.1	300
ML42HS0L4840	100	L	12200	0.31	5	300
ML42HS0L4X20	100	L	12300	0.167	2.5	300
ML42HS2L4240	151	L	22000	4.2	90	600
ML42HS2L4600	151	L	22000	0.75	14.5	600
ML42HS2L4800	151	L	22000	0.41	8.5	600
ML42HS2L4X20	151	L	22000	0.177	3.6	600
ML42HS2L4X60	151	L	22000	0.116	2.1	600
ML42HS3L4270	202	L	31000	4.2	100	800
ML42HS3L4600	202	L	31000	1.02	22	800
ML42HS3L4800	202	L	32000	0.55	13	800

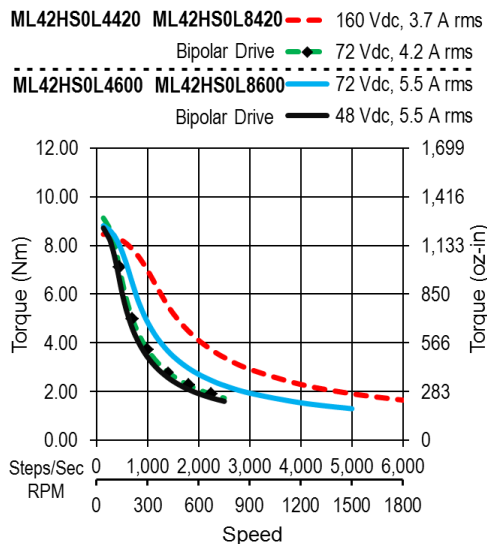
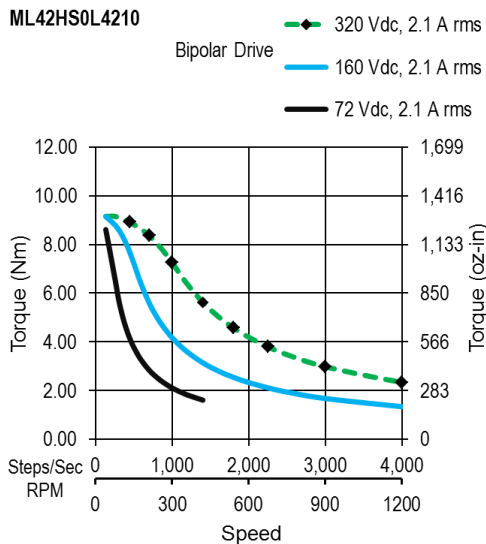
ML42HS3L4X20	202	L	31000	0.24	5.5	800
ML42HS3L4X60	202	L	32000	0.152	3.2	800

Mechanical Dimensions

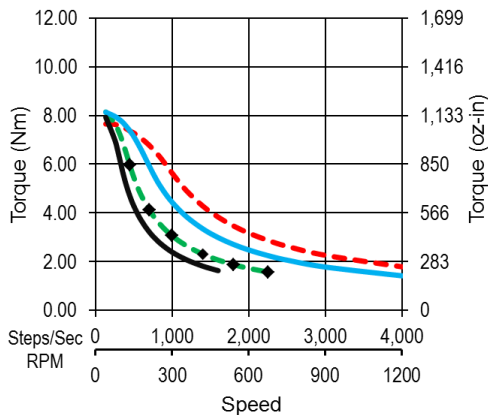
Series	L (mm)	Mass (kg)
ML42HS0	100	5
ML42HS2	151	8.3
ML42HS3	202	11.6



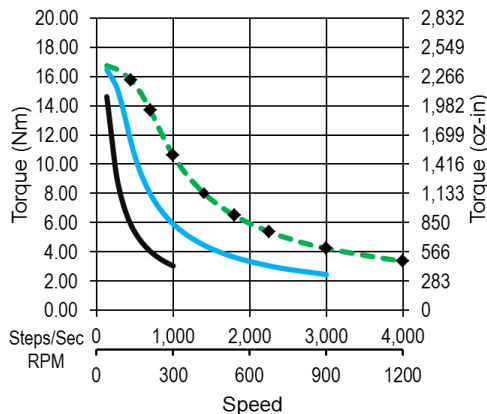
Dynamic Torque Curves



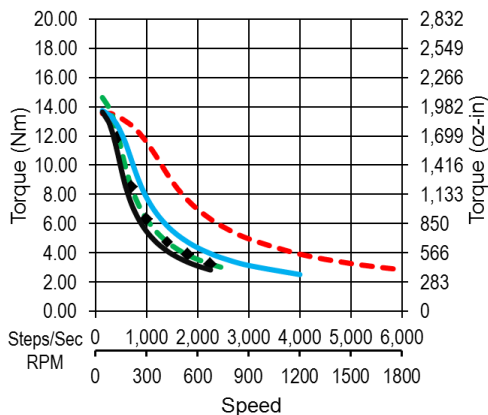
ML42HS0L4X20 ML42HS0L8600 --- 48 Vdc, 9 A rms
 Bipolar Drive --- 24 Vdc, 10 A rms
ML42HS0L4840 ML42HS0L8420 --- 48 Vdc, 7 A rms
 Bipolar Drive --- 24 Vdc, 7 A rms



ML42HS2L4240 --- 320 Vdc, 2.4 A rms
 Bipolar Drive --- 160 Vdc, 2.4 A rms
 --- 72 Vdc, 2.4 A rms



ML42HS2L4600 ML42HS2L8600 --- 160 Vdc, 4.5 A rms
 Bipolar Drive --- 72 Vdc, 5 A rms
ML42HS2L4800 ML42HS2L8800 --- 72 Vdc, 6 A rms
 Bipolar Drive --- 48 Vdc, 6 A rms



ML42HS2L4X60 ML42HS2L8800 --- 48 Vdc, 12 A rms
 Bipolar Drive --- 24 Vdc, 12 A rms
ML42HS2L4X20 ML42HS2L8600 --- 48 Vdc, 9 A rms
 Bipolar Drive --- 24 Vdc, 9 A rms

