

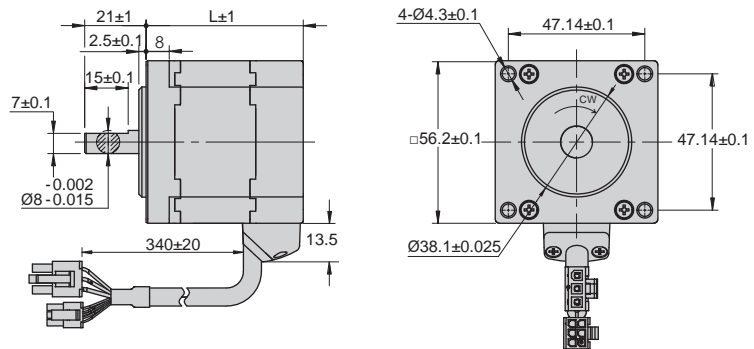
Motor Specifications

Frame 57mm

	Unit	Type		
		AM57BL60L2	AM57BL120L2	AM57BL180L4
Length	mm	54.5	82.5	120.5
Input Voltage	VDC	24	24	48
Rated Power	W	60	120	180
Phases		3		
Rated Speed	RPM	4000		
Max. Speed	RPM	5000		
Rated Torque	Nm	0.145	0.29	0.43
Peak Torque	Nm	0.29	0.58	0.86
Rated Current	Arms	3.2	6.9	4.5
Peak Current	Arms	6.4	13.8	9.0
Voltage Constant	Vrms/Krpm	3.08	3.00	6.45
Torque Constant	Nm/Arms	0.045	0.042	0.096
Inertia	g.cm ²	148	279	456
Resistance ± 10%(25°C)	Ω	0.48	0.18	0.44
Inductance	mH	0.45	0.18	0.54
Sensor		HALL		
Insulation class		E		
Protective Rating		IP40		
Storage Temperature		-25~+70°C		
Operating Temperature		0~+50°C		
Operating Humidity		85% RH or below (noncondensing)		
Operating Environment		Indoors, away from direct sunlight, corrosive gas and flammable gas		
Altitude		1000m or below		

Dimensions (Unit: mm)

Series	Length
	mm
AM57BL60	54.5
AM57BL120	82.5
AM57BL180	120.5



Torque Curves

