

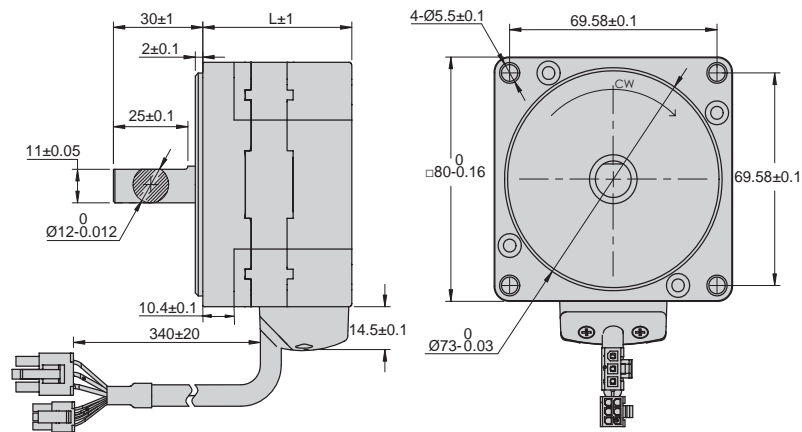
## Motor Specifications

### Frame 80mm

	Unit	Type			
		AM80BL100L2	AM80BL200L2	AM80BL200L4	AM80BL300L4
Length	mm	50	67	67	84
Input Voltage	VDC	24	24	48	48
Rated Power	W	100	200	200	300
Phases		3			
Rated Speed	RPM	4000	4000	4000	4000
Max. Speed	RPM	4500	4500	4500	4500
Rated Torque	Nm	0.24	0.48	0.48	0.72
Peak Torque	Nm	0.48	0.96	0.96	1.44
Rated Current	Arms	5.00	10.10	5.06	7.49
Peak Current	Arms	10.00	20.20	10.12	14.98
Voltage Constant	Vrms/Krpm	3.44	3.38	6.76	7.03
Torque Constant	Nm/Arms	0.048	0.048	0.095	0.096
Inertia	g.cm <sup>2</sup>	38	74	74	108
Resistance ± 10%(25°C)	Ω	0.18	0.10	0.32	0.23
Inductance	mH	0.34	0.18	0.70	0.95
Sensor		HALL			
Insulation class		E			
Protective Rating		IP40			
Storage Temperature		-25~+70°C			
Operating Temperature		0~+50°C			
Operating Humidity		85% RH or below (noncondensing)			
Operating Environment		Indoors, away from direct sunlight, corrosive gas and flammable gas			
Altitude		1000m or below			

### Dimensions (Unit: mm)

Series	Length
	mm
AM80BL100	50
AM80BL200	67
AM80BL300	84



### Torque Curves

